



jordan fishwick

WEST DIDSBURY
Inglewood



Inglewood, West Didsbury, M20 3ZA

£300,000



The Property

An extremely light and spacious two doubled bedroom top floor apartment offering stylish living space with a private terrace and residents parking. With its ideal location in West Didsbury close to Burton road and Lapwing Lane Metro Station it is perfectly suited to couples. The well presented accommodation is warmed by gas central heating and in outline comprises: Entrance hall with cloaks space, impressive lounge/dining room with French doors opening to the terrace and neatly fitted kitchen with integrated appliances, two excellent double bedrooms complete with bed and wardrobes. Recently fitted bathroom with shower over bath. Communal gardens to the rear of the property. Hardwood flooring throughout completes the impressive specification. No chain.

Directions

M20 3ZA



- Two Double Bed top floor Apt
- Private balcony
- Walking distance to Metro Station
- Open plan living area
- Light and spacious accom
- Hardwood flooring throughout
- No chain
- Private residents parking

Postcode - M20 3ZA

EPC Rating - D

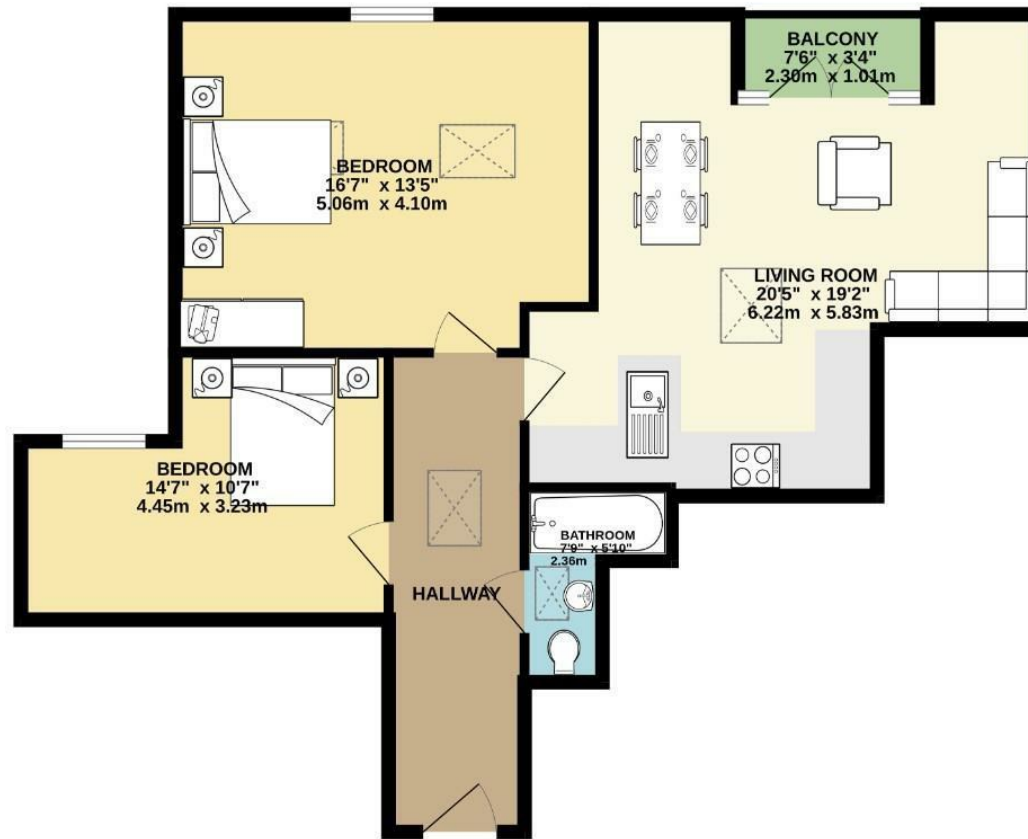
Floor Area - 775.00 sq ft

Local Authority - Manchester City Council

Council Tax - B



GROUND FLOOR
776 sq.ft. (72.1 sq.m.) approx.



TOTAL FLOOR AREA: 776 sq.ft. (72.1 sq.m.) approx.
Measurements are approximate. Not to scale. Illustrative purposes only.
Made with Metrcap ©2025



These particulars are believed to be accurate but they are not guaranteed and do not form a contract. Neither Jordan Fishwick nor the vendor or lessor accept any responsibility in respect of these particulars, which are not intended to be statements or representations of fact and any intending purchaser or lessee must satisfy himself by inspection or otherwise as to the correctness of each of the statements contained in these particulars. Any floorplans on this brochure are for illustrative purposes only and are not necessarily to scale.

Offices also at: Wilmslow, Macclesfield, Hale, Sale, Chorlton, Glossop, Manchester & Salford

757-759 Wilmslow Road, Didsbury Village, Manchester

0161 445 4480

didsbury@jordanfishwick.co.uk
www.jordanfishwick.co.uk